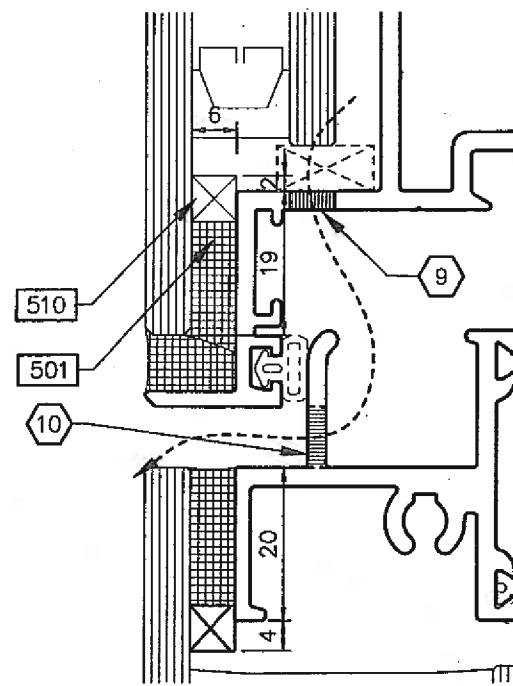


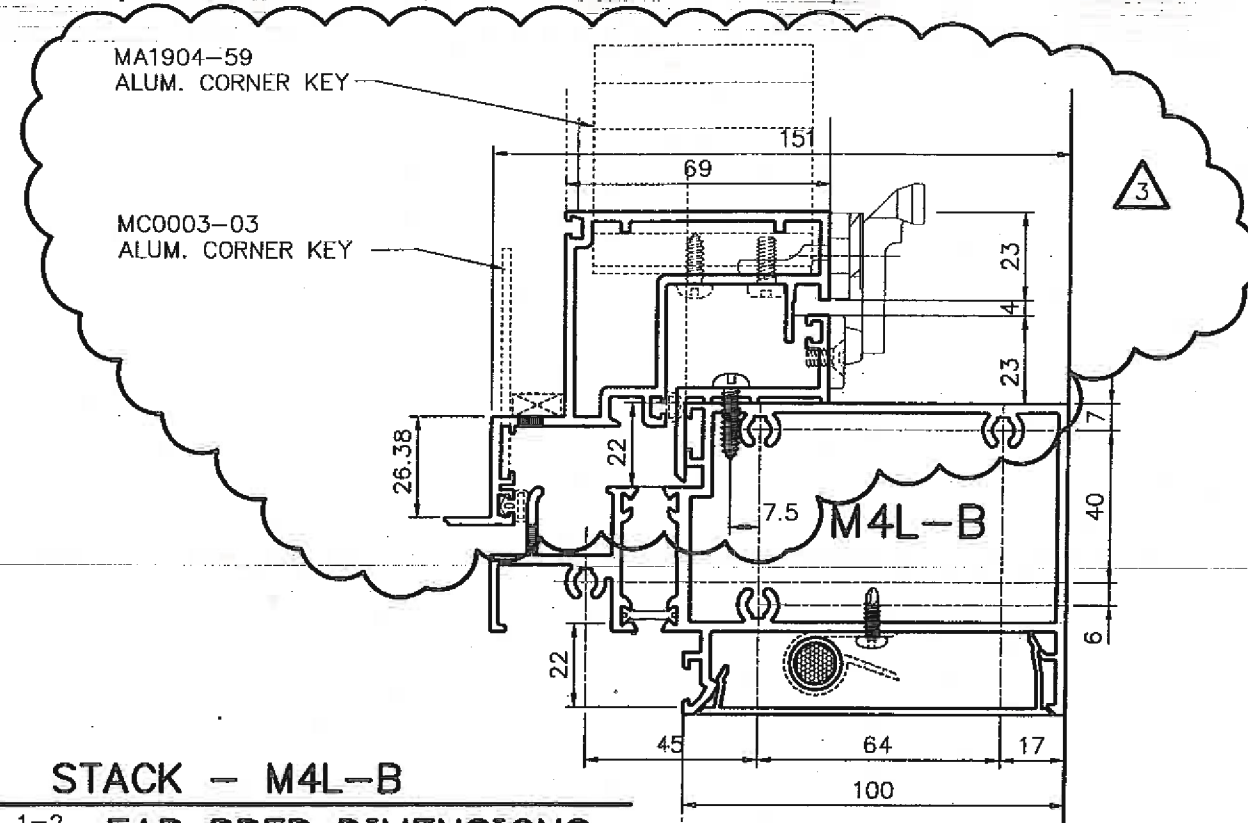
JOINERY SEALANT DETAIL

1=2



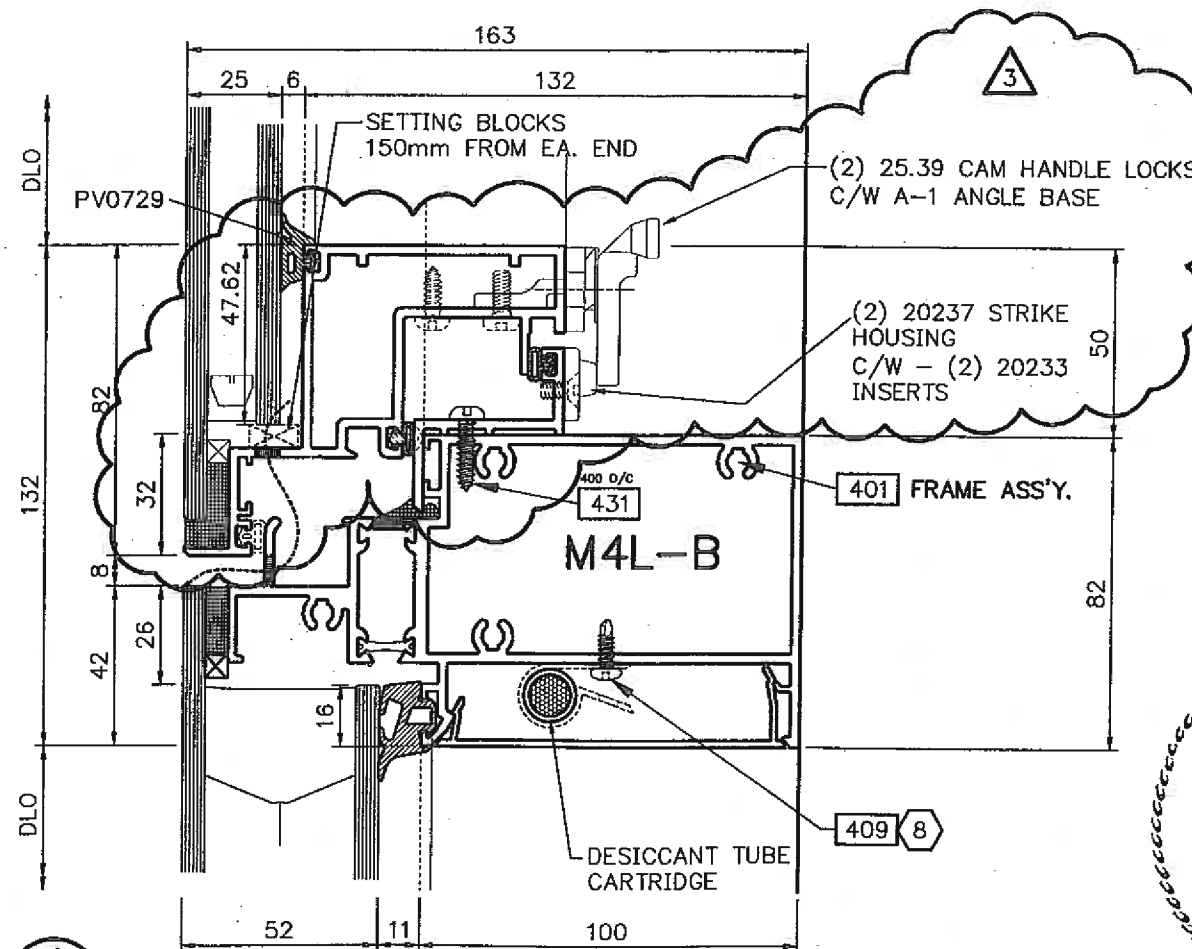
GLAZING DETAIL

1=1



STACK - M4L-B

1=2 FAB PREP DIMENSIONS



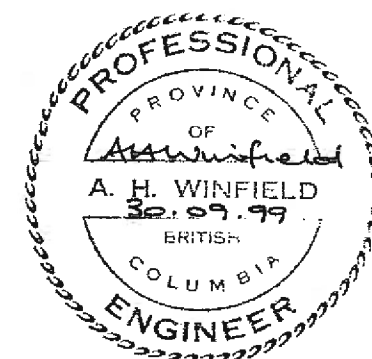
VENT SILL

1=2 (ARCH. REF. 3/A-711)

2310

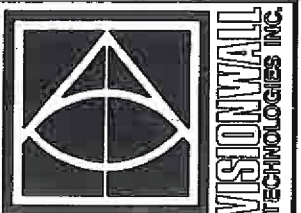
KEYNOTES:

- 1 SCREWS SPACED AT 100mm O/C
- 2 SCREWS SPACED AT 200mm O/C
- 3 SCREWS SPACED AT 300mm O/C
- 4 SCREW AT 1/3 POINTS
- 5 (2) NOMINAL 10mm $\phi$  HOLES AT 1/4 POINTS FOR DRAINAGE AND PRESSURE EQUALIZATION
- 6 MACHINE SLOT 20mm LONG FOR WEEP/PRESSURE EQUALIZATION (3 Per)
- 7 INSTALL PLUG AT EACH END OF RAIL. APPLY SEALANT TO SURFACES AS INDICATED BEFORE ASSEMBLING.
- 8 2 CLIPS PER DESICCANT CHAMBER, 1 SCREW PER CLIP.
- 9 3-6mm $\phi$  HOLES 75mm FROM EA. END AND 1 AT CENTERLINE
- 10 1-8mm x 20mm DRAINAGE SLOT AT CENTERLINE



WALL CENTRE PHASE II  
Vancouver, British Columbia

OPERABLE VENT SILL  
VISION / VISION  
DETAIL



J204 Part/Job No. 2603 Drawing No. 3 Rev.

Rev.	Description	By	Date
3	add notes, details/profile dims.	A.L.	99/04/28
2	vent dies revised / dims rev	ck	99/05/10
1	vent die revised / corner key	av	99/05/29

SEP 30 1999